



Total Solution Provider in Saw Device

SA1575LL1

GPS, Balanced RF SAW Filter
Revision 0: August 2007



- Electrical Characteristics
 - Package Dimensions
 - Testing Environment
 - Frequency Characteristics
-

SAWNICS Inc.

460 Cheonheung-ri, Seonggeo-eup, Cheonan-si, Chungcheongnam-do, 330-836 / Korea.
Tel: +82 41 550 9372 / Fax: +82 41 550 9399 / www.sawnics.com

□ Electrical Characteristics

Maximum Ratings

Parameters Description	Unit	Minimum	Typical	Maximum
Operating Temperature Range	°C	-40	-	+85
Storage Temperature Range	°C	-55	-	+95
Maximum DC Voltage	V	-	-	3
Maximum Input Power	dBm	-	-	10
Source Impedance (single ended) ⁽¹⁾	Ω	-	50	-
Load Impedance (balanced ended) ⁽¹⁾	Ω	-	100	-
Package type & size	L1			
Length x Width	mm ²	-	2.5 x 2.0	-
Height	mm	-	-	1.0

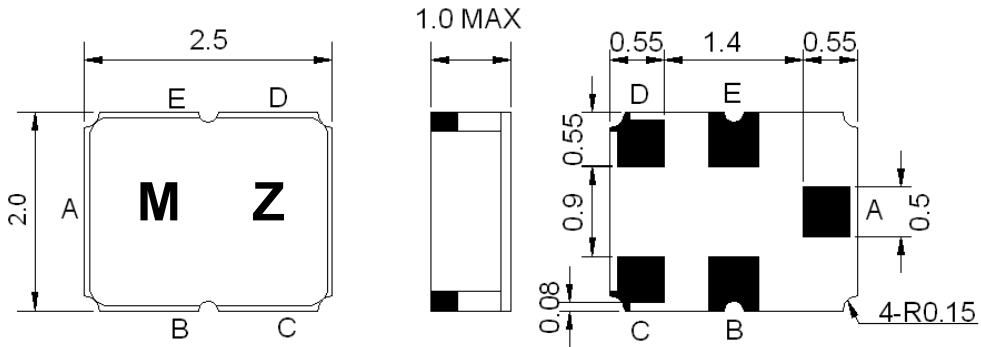


Electrical Specification

Parameters Description	Unit	Minimum	Typical	Maximum
Center Frequency (Fo)	MHz	-	1575.42	-
Insertion Loss within 1574.42~1576.42MHz	dB	-	1.35	1.9
Amplitude Ripple within 1574.42~1576.42MHz	dB _{p-p}	-	0.1	0.5
Attenuation:				
100~960 MHz	dB	40	48	-
960~1425 MHz	dB	35	46	-
1425~1475 MHz	dB	30	54	-
1475~1515 MHz	dB	20	39	-
1515~1525 MHz	dB	17	39	-
1625~1635 MHz	dB	12	22	-
1635~1675 MHz	dB	20	24.5	-
1675~1750 MHz	dB	30	34.5	-
1750~1805 MHz	dB	35	43.5	-
1805~1980 MHz	dB	40	50	-
1980~2400 MHz	dB	35	40	-
2400~3155 MHz	dB	40	56	-
3155~6000 MHz	dB	35	55	-
VSWR within 1574.42~1576.42 MHz	-	-	1.3	1.8
Output Amplitude balance(S31 / S21)	dB	-2.0	1.3	2.0
Output phase balance($\Phi(s31)-\Phi(s21)+180$)	degree	-10	1.0	10

Notes : (1) With Matching Network

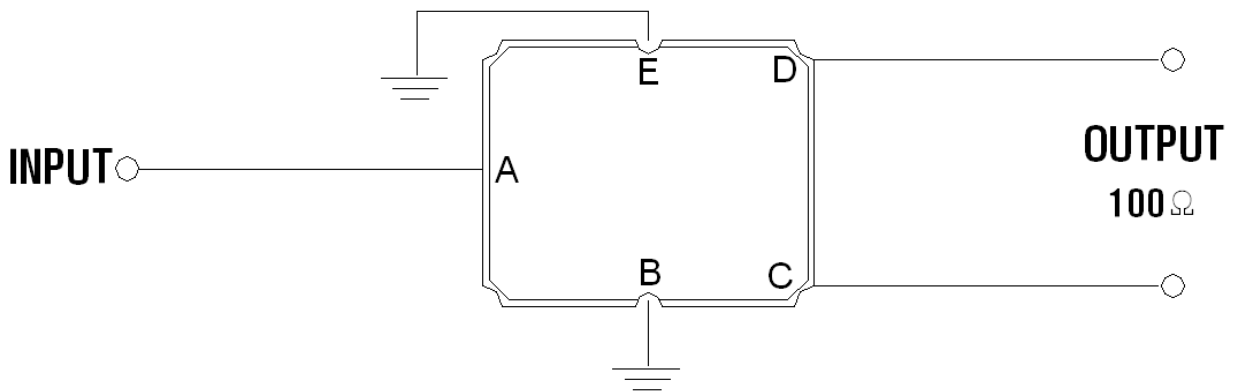
Package Dimensions



Marking Descriptions	
M	Series Number
Z	Date Code(Year+Month)

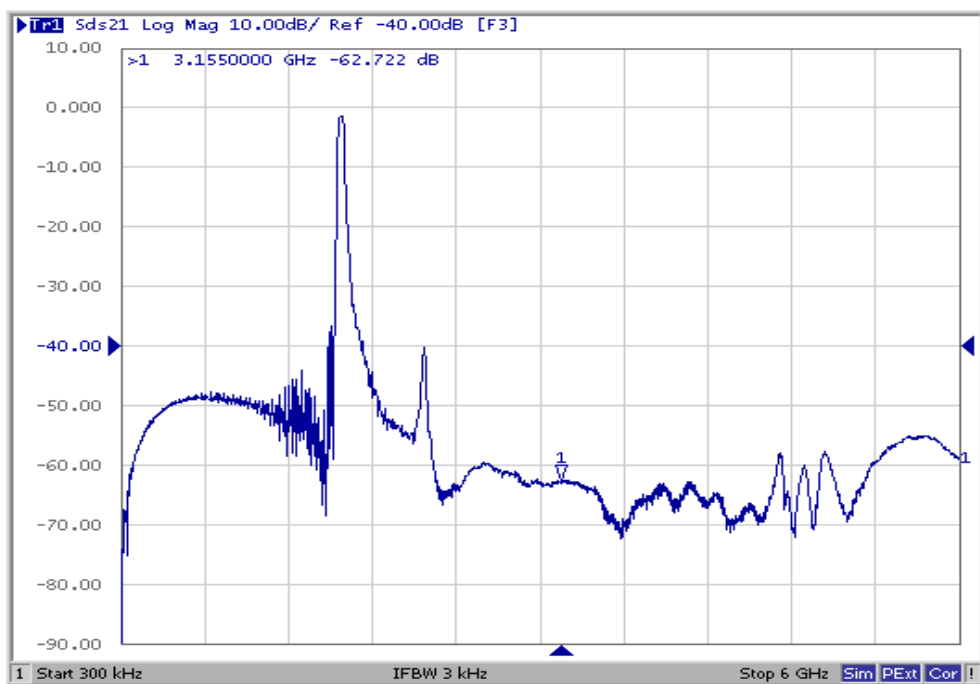
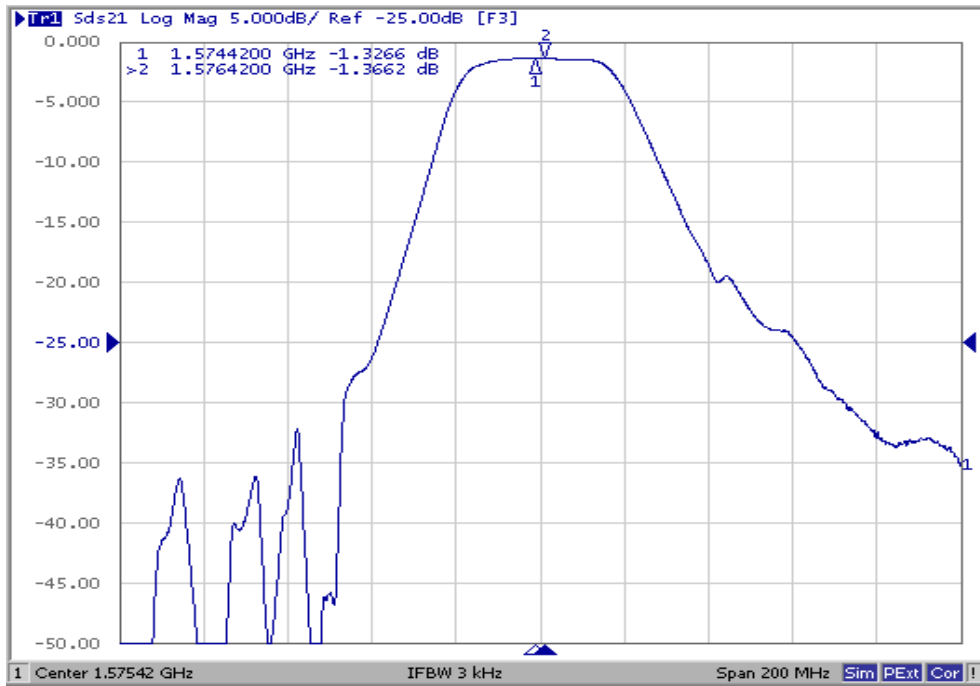
Pin Description	
B , E	Ground
A	In
C , D	Out

Testing Environment



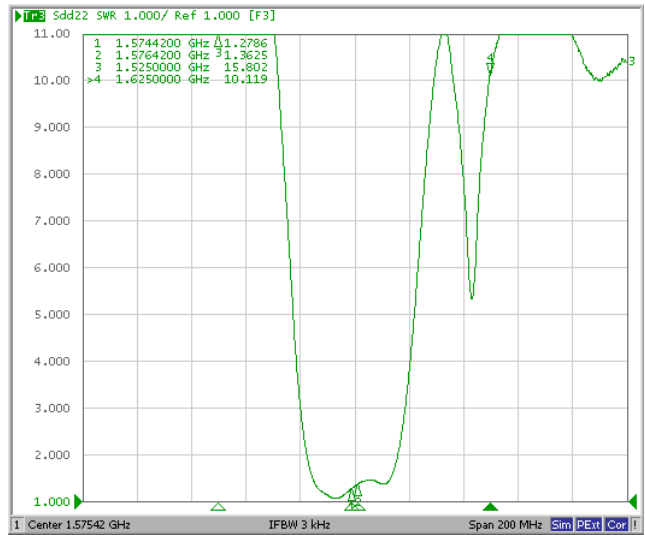
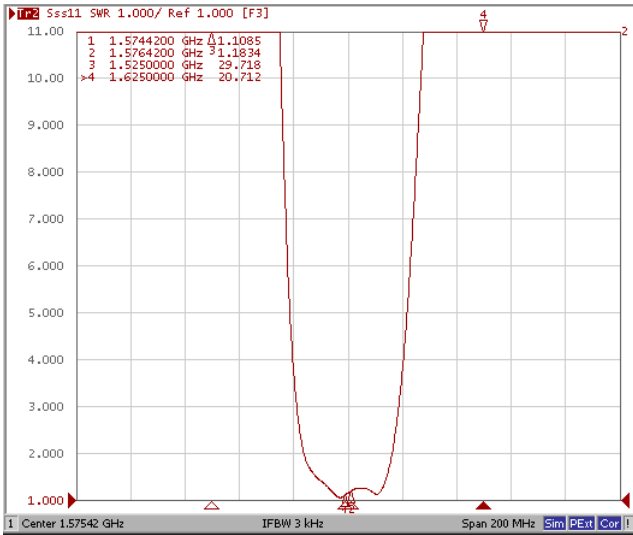
□ Frequency Characteristics

Frequency Response





VSWR



Smith Chart

